



# Tunable Falls Community School

www.tunablefallsschool.nsw.edu.au

info@tunablefallsschool.nsw.edu.au / (Ph) 0491 466 619

117 Upper Tuntable Falls Road Nimbin NSW 2480

10 Feb 2026, Term 1, Newsletter 1. Next issue due 3 March

Welcome to 2026! I hope everyone is enjoying their new class groups and a return to routine. I'm not a huge fan of being responsible for the routine, but it's always lovely once we settle in.

**Welcome also to all our new families and students!** Kaali and Ben with Remy, Elsie with Jera, Annie and Jimmy with Sonny, Jacinta with Teddy, and our new Kindies joining their siblings, Kobi, Zoe, and Pascoe. [Please say hi if you see them around and make them feel at home.

We also welcome a new cleaner this term, Nicola - Welcome Nicola!

**It was wonderful to see a strong turnout at Saturday's Family Workday.** The school grounds are looking great, the kitchen is spick and span, and we had a great parent meeting led by Sean. The main theme was **Participation**. As a *Parent-Run school, parents are responsible for everything from top level governance down to grounds maintenance and cleaning. If every family puts in a little energy, things run smoothly and nobody gets burnt out.*



## School Calendar:

- **Term 1 Ends** – Thu, 2 Apr
- **Term 2 Starts** – Mon, 27 Apr

## School Bell:

- School starts: 9:05
- Recess: 11:00-11:30  
*Thu: 10:30-11:00*
- Lunch: 13:00-13:45  
*Thu: 12:30-1:15*
- School ends: 14:45
- **After school supervision ends 3:15pm**

## Committee Meetings:

Thursdays, 3:15pm  
(At school, subject to change)

## UPCOMING EVENTS

- **Family Welcome Dinner**  
Thu, 12 Feb, 5:00pm
- **Guruman Waste Excursions**  
Tue, 17 Feb & 10 March
- **Swimming Carnival**  
Fri, 20 Feb, Nimbin pool  
**VOLUNTEERS NEEDED**
- **NAPLAN - Yr. 3 & 5**  
11-23 March
- **Mobile Dentist Visit**  
Thu, 12 March  
*\* Fill in online consent form*

## **TUE & WED: Closed Shoes**

Important for safe participation in STEM activities and Garden & Kitchen time.

## **WED & THU: Hair Ties**

Important for safe participation in the kitchen and at circus.

An email went out last term explaining that **Roster Day Fees** have gone up from this term - they are now \$40/week, invoiced at the end of term.

You can reduce your Roster Day fees by coming into school each week and contributing. This might be cooking a meal, shopping, cleaning, gardening, helping in the classroom or on an excursion, joining the committee, or sharing a special skill or passion with the kids.

Think about what you have to offer and how you would like to be involved in your children's education. We have a very special opportunity to shape our kids' schooling, and part of what makes Tutable so magical is the relationships and community that form when families work and play together.



*Emmy showing the kids a barn owl she found on the side of the road.*

You will find a **Roster Jobs List in the Newsletter** with a list of suggestions and any urgent jobs, please check it regularly and get in touch with René or Melissa in the office when you are ready to join in.

We have several school camps over the year. This term Guruman and Gooarng will be heading off in Week 8 for their first adventures of the year. We always need parent helpers along, but to attend any school camp all parents must have a valid **Working With Children Check**. You can get this free as a volunteer, through Services NSW. The process can take a little while so start now so you can attend our fantastic Whole School Camp and any class camps throughout the year.

Our first gathering of the year is the **Welcome Family Dinner**, this Thursday 12th Feb from 5pm. To make these gathering happen, we need 3-4 helpers each for 4 shifts – to cook, set up, serve and pack down. Please contact the office to sign up. It's a great way to catch up with other parents and get to know new families.

**Parent-Teacher meetings are coming up in Weeks 3 & 4**, keep an eye out for booking forms or emails from your class teacher. These meetings are a great way to get to know your teacher, keep up with how your child is going and raise any concerns, or lavish them with love for being so awesome.

If you haven't filled in your **Family Camp Survey** from last year's family camp at Stradbroke Island that was emailed out late last year, please do so ASAP. The survey will help inform what we do for this year's family camp in September, so all feedback is welcome whether you attended the camp or not.

Lastly, **big-ups to Billi and Anna who are our school lunch co-ordinators**. Along with helpers, they are providing delicious nutritious meals for our kids on Mondays. They can always use more hands, and ideally, we could do lunches more than one day a week with more people on board. It's a fun social way to tick off a Roster Day, and you don't have to commit to every week, chat to Billi or Anna to get involved.

Hope to see you all on Thursday at dinner!

Elowyn xo



## MOBILE DENTIST - Dental Checkups

12 March at Tuntable Falls Community School

### OUR SERVICES

Our service is designed to make it easy for parents to ensure their child receives the recommended dental care with as little inconvenience as possible.

We provide dental services at childcare centres and schools, in a safe familiar environment **with a classroom educator present.**

[www.funsmiles.com.au](http://www.funsmiles.com.au)

### PARENTS

- Please complete the Child Dental Benefits Consent Form and Medical History Form provided by your school or childcare centre (link and QR provided → )
- The *Fun Smiles* team will contact you regarding your child's eligibility to the *Child Dental Benefits Scheme*.
- On the day of our visit:
  - Children participate in a fun educational session with our dental team.
  - Children are then seen for their dental checks.
  - Each child receives a take home dental pack with a certificate, toothbrush, stickers and report card to take home.
  - The *Fun Smiles* team will contact you if we need to communicate anything further regarding your child's dental care.

### CONSENT FORM

<https://form.jotform.com/FunSmiles/dental-form>

Consent QR Code:



Registrations are now open for the 2026 soccer season. Join the fun at Nimbin Headers Football Club 🌟

⚽ Ages 5 to 16 – Don't miss out on the chance to be part of something great! ⚽

🏆 Top Coaching | 🏃 Build Your Skills |

💖 Fitness, fun and friendships

Come and join the *greatest little club around* and start your footballing journey with us!

📅 Registration Dates:

1st Feb – 1st March

Register online at [playfootball.com.au](http://playfootball.com.au)

🗨️ 'Come & Try' Session: at the club

7th Feb, 4:30-5:30pm

New players are welcome to come down, try the game, and meet the team!

For more information please contact- [nimbinheaderssportsclub@gmail.com](mailto:nimbinheaderssportsclub@gmail.com)

# Communication:

## Calendar of Events:

### On the school's website:

All events and excursions are added to the calendar of events, available from our website  
<https://www.tunablefallsschool.nsw.edu.au/calendar-of-events>

### Integrating the school calendar with your existing digital calendar:

Access the Google Calendar to get timely notifications of events and excursions.

<https://calendar.google.com/calendar/embed?src=tunablefallsschool%40gmail.com&ctz=Australia%2FSydney> In the bottom righthand corner, click to add 

Use this link to access the calendar from applications other than Google Calendar.

<https://calendar.google.com/calendar/ical/tunablefallsschool%40gmail.com/public/basic.ics>

## Absentees:

- It is important to **call the Office by 9:30am** if your child is unable to attend school for any reason.
- If children arrive after 9:05am, or are picked up before 2:45pm, parents/carers need to sign the **Late Arrival/Early Pick-Up Register** in the office.
- Please provide a **Doctor's Medical Certificate** to the Office if your child is absent due to illness for five **consecutive days** or more.
- If you are **planning time away from school** during the term, please complete an *Application for Exemption from School* form at the Office.

## Committee:

The committee feels strongly about open communication at the school. Please keep our contact details handy and don't hesitate to contact whomever you feel comfortable with.

Committee Member	Position	Phone Number	Email
<b>Hannah Gash</b>	President	0472 615 023	hannahpearl@hotmail.com
Contact regarding liaising with teachers and complaints/compliments.			
<b>Adjana Flow</b> (Kristoff Brunet de Courssou)	Treasurer	0481 090 348	adjana.tfcs@gmail.com
Contact regarding fees, and social media.			
<b>Cameron Blair</b>	Secretary	0466 981 733	cameronblair@live.com
Contact regarding liaising with teachers and complaints/compliments.			
<b>Sean Spain</b>	Member	0490 178 927	seanspain@gmail.com
Contact regarding liaising with teachers and complaints/compliments.			
<b>Dorje Van Yzendoorn</b>	Member	0438 910 275	lorddorje@gmail.com
Contact regarding liaising with teachers and complaints/compliments.			



## Birthdays

We would like to congratulate the following students on their birthdays. *Happy birthday precious possums!*





# Roster Day Tasks – How to Get Involved.

## Top Priority Jobs:

- Weeding the gully
- Classroom participation, i.e. reading with kids or helping with art activities.

## Ad-Hoc Tasks:

- Share your skills & class support – talk to teachers about how to help in the classroom
- Grant writing – look for and apply for grants (from home)
- Veggie garden – weeding, mulching, planting, etc. Talk to teachers about what needs doing.
- Weeding – playground, gardens, forest gully etc.
- Playground maintenance – rake sandpit, rake soft fall, sweep paths and steps
- Firewood (Winter)– split and box firewood, gather or cut kindling for Gooarng & Yuruugin classrooms
- Cleaning ideas – windows, cobwebs, gurney footpaths, lost property collection, wipe & rinse sinks by kitchen, toilets, and middle classrooms.

## Regular Tasks that need Dedicated Input:

- School Committee – weekly meetings + responsibilities (new members always welcome)
- Rubbish bins – Wednesdays, Thursdays. (Weekly – *Position currently filled*)
- Library – cataloguing, borrowing, cleaning, etc. (Every other week – *help needed*)
- Kitchen coordinator – manage the kitchen roster and shopping for school lunches. (Weekly – *Position currently filled*)
- School lunches – cooking, serving, tidying (Weekly from 10am – 2pm, The more the merrier)
- Washer – kitchen dish towels, tablecloths, school hats (Fortnightly, at events, at end of term. Washing done at home – *Position currently filled*)
- Newsletter article – one-page writeup (Fortnightly, from home – *Position currently filled*)

## Event Tasks:

- School event dinners – menu, shopping, prep, cooking, serving
- Excursions or camps – menu, shopping, packing trailers, helping with meals and activities
- Sport – helping at Friday school sport, or at gala days
- Fete – organising and running stalls

## Contact Hannah for more information.

Hannah Gash, Committee President - 0472 615 023

[Remember to sign the Parent Roster Book in the office when you come in.](#)

(Weekly Roster Day contributions are 2 – 4hrs depending on the type of task)



# Learning and Support News

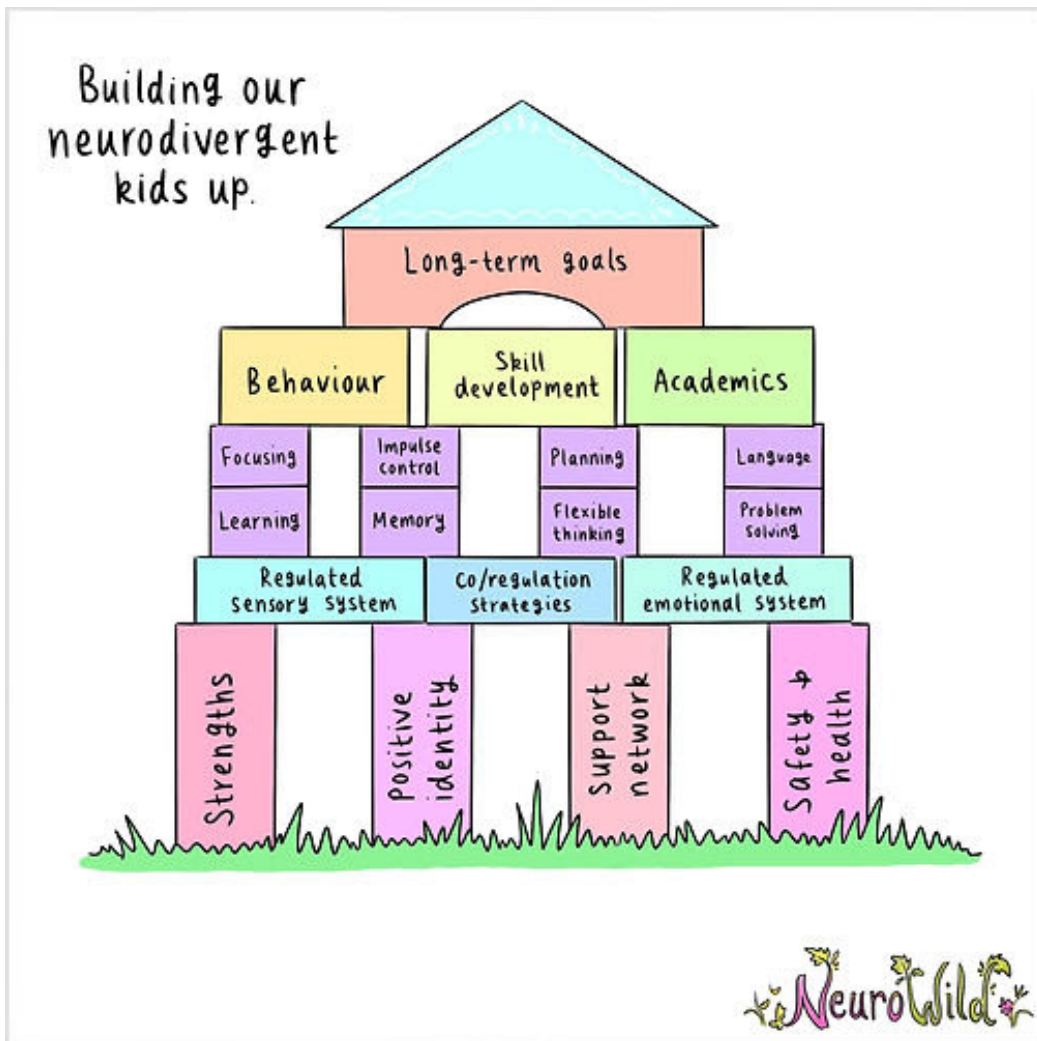
Dear families,

Welcome back to another exciting year of learning at Tutable Falls Community School!

## Our Learning Support Team 2026

- Learning and Support Teacher (LaST) – Kate Dempsey
- Student Learning Support Officers (SLSOs) – Mandi, Jericho and Amanda
- **Wellbeing Officer** – Sarah will be finishing up in the Wellbeing Officer position on 26th February. We thank Sarah for her work with the students at TFCS and wish her well in her future endeavours. We are pleased to welcome Amy-Kate Dillon to the role of Wellbeing Officer. Amy-Kate brings a wealth of knowledge and experience to the role and is a very active member of our parent community at TFCS. Welcome Amy-Kate!

We love this image from NeuroWild that shows how neurodivergent students can be built up. We use this approach at TFCS when working with children.



Have a lovely week ahead.

With thanks,  
Kate Dempsey (LaST)



## Buribi (Kindy)

Hello Buribi parents,  
Welcome to your first newsletter.

You will find all the important dates on the front page and this section is devoted to sharing learning experiences and photos from the Kindy class with you.

Each morning, we transition into our learning environment through our morning investigations. The class is exposed to a visual text and responds to it through several modalities such as dramatic play, visual arts, construction, and sculpture. There is also a literacy component when the reporter and photographer engage in structured conversations with peers to collect information. This week's theme explored *boundaries and consent*; the dramatic play area was set up as a hospital and patients arrived with accidents from holiday adventures. Remy: "hello, are you ok?" Tilly: "No, I broke my leg" Remy: "I'll call Doctor Zoe." Dr. Zoe: "Can I please touch your leg while I cut it off?"



Pascoe, Jera, Teddy and Yoda enjoyed constructing with the blocks different city scapes they travelled to. Pascoe and Yoda also created some truly beautiful paintings of favourite places they visited.

Home visits will commence on Thursday, 12th of February, when we will venture to Zoe's home, where she will share three things that make her home special to her.

I hope to see you all at our Family Welcome Dinner this Thursday.  
Peace, love and Buribi babies.





# Gooarng (Yrs. 1&2)

Hello Families,

Welcome to another year of learning fun with all your little Gooarng (Possum) kids. The whole class has had a wonderful start to the year with the now Yr 2's being great role models for the new Yr 1 kids. As a class we started the year by discussing how we want our class to feel, and what this would sound and look like. From this point we developed our class rules, or ways of being, that we all agreed to.

This term we are learning about our **families** and how families within our class and all over the world are similar and different. We will be looking at **how people lived and communicated** in the past and how communication has changed over time. In exploring these concepts, the kids will be keeping a regular diary, writing letters to friends and family, and recounting oral and written stories. We will explore the **traditions of oral storytelling**, particularly through aboriginal dreamtime stories.

During Investigations, on Monday, Tuesday, and Friday mornings, the kids



will have the time to learn through exploring in an intentional environment their own interests and the class learning.

The kids have already shown a keen interest in **tinkering**, so please let me know if you have any items (such as old phones etc.) that may be good for pulling apart.

**Parent teacher meetings** are scheduled for weeks 3 and 4. There is a timetable on the classroom door for you to choose a time that suits you, or you can ring the office to book in. I look forward to meeting with you all.

**Homework** - Please let me know if you would like to receive homework for your child - I definitely recommend home readers. *Once homework folders are given out, they will be updated every Monday - so please ensure your child has their folder in their bag every Monday morning.*

**Gooarng Library Day is Friday**, so please ensure any library books come back to school on Fridays for return.

We have a **class camp** this term where we can all get to know each other more and share stories around the fire. Further information will be going out in the coming weeks. We will definitely need parent help to make this camp a reality, and *it is a requirement that all Yr 1 kids have a parent with them*. In addition, all parents staying overnight on the camp must have a current *Working With Children Check*, so please apply for one if you don't already have one.

Up we grow,  
Ishta





## Yuruugin (Yrs. 3&4)

Welcome aboard to the 2026 chapter of Yuruugin. The classroom has been rearranged and re-optimised for improved organisational flow, and students are responding positively to, what is for the newcomers, their new space and routines. I have enjoyed the enthusiasm for the new year!

Across **English** and **HSIE**, our unit is titled **First Practices and Biodiversity**. So far, we have looked at phasmids from Lord Howe Island and how their population has changed, how fish traps were used in Brewarrina, labelling on maps and creating explanatory paragraphs, the first E. in the P.E.E.L (point, explain, evidence, link) persuasive text strategy. We have started a look at 'adjective clauses' using sentences on the topic of biodiversity. The new Yr 3 students have also got their feet wet in the spelling routine used in the classroom, which targets their individual needs in code acquisition.

**Maths** has been learning about numbers, how to break them down into place value, using skip count patterns to work on more complicated multiplication problems. Yr 4 will be specifically working on decimals too. End of this week we start looking at addition and subtraction strategies which carries onto the partitioning numbers we have been doing.

We have started the process of making our **artworks** with the interplay of lines and where they dissect. The shapes that come out will be coloured with pastel gradients then placed back together on a background for the *Autumn Art Show*.

**Parent teacher meetings** start next week, Week 3, make sure to let me know if you want to arrange a meeting and I will put it on the schedule that was shared in a recent group communication. There is a class chat on Telegram which is the optimal place to keep in tune with messages from myself and the parent cohort. Parents are welcome to join us in the classroom at any time!

On a personal note, I will be taking some personal leave in the middle of Week 8 and coming back Week 4 of Term 2. The class will be in the very capable hands of Jericho who is regularly in the classroom working with Yuruugin students.

### **IMPORTANT DATES:**

**Week 2:** Family Welcome Dinner - Thu, 12 Feb, 5:00pm

**Week 3:** Swimming Carnival - Fri, 20 Feb

**Week 10:** NAPLAN for Yr 3 students – 11-23 March





## Guruman (Yrs. 5&6)

The biggest, most exciting thing this term is, of course, the **Brisbane Excursion**. We are so lucky that we can catch the *Science Week activities* while we are there. The accommodation is so conveniently close to Brisbane's cultural precinct, so we can walk the city to all our activities at the *Sparks Lab, the Museum, the Art Gallery, Urban Xtreme and Southbank*.

In class, we are investigating the **Folk Tale genre** with all its sub-genres and examining different perspectives in these stories, eventually writing a few stories in these styles.

We have started our **Maths** year with games, artwork and drills, with a focus on massive numbers and tiny numbers, and the operations to work with them.

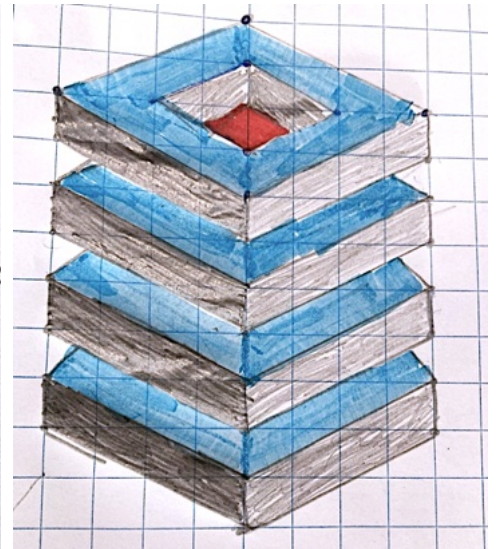
We have also started investigating the **parts of speech**, making random but grammatically correct sentences that will lead to some bizarre artworks.

In **Music**, we are learning ukulele: how to play it and how to read music for it. This will lead on to guitar later in the year. We have all chosen individual instruments as well: three saxophones, a trumpet, and violins.

Working up to the **Autumn Art Show**, we will be experimenting with papier-mache printing, with unpredictable results at this point, but fun to see what happens.

Yr 5s and 3s have **NAPLAN** coming up in March, so we are doing preparations for that: writing practice, online practice tests and typing drills.

It is a busy but fun term ahead, with Guruman going in leaps and bounds.



## Numeracy

- Number counting forward & backwards to 30
- writing numbers to 10
- matching numbers to 20
- friends of 10
- skip counting by 2's  
STEAM (science technology English Art & Maths)
- number value to 20
- measuring qualities for cooking

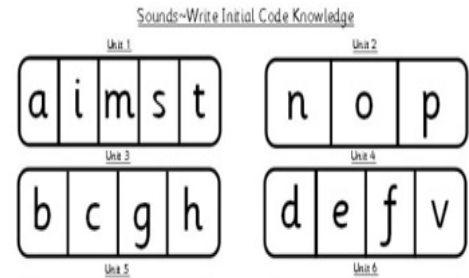
## Investigations

Investigations is a time for the kids to follow and explore their own ideas in a supported intentional environment. Activities include:

- dramatic play
- construction
- collage
- science and nature
- tinkering
- painting/drawing
- sensory play
- reading
- Writing
- Maths resources

## Literacy

Daily Sounds-write practice using Consonant-Vowel-Consonant (CVC) words using letters from unit 1-4. (2 weeks on each unit)



## Personal Development

- Smiling Minds mindfulness program
- Obstacle course and

## Indigenous

- Daily acknowledgment of country
- listening to indigenous stories
- Reading Indigenous stories

## Our Place, our place Term 1 2026

### Buribi



## Excursions/Events

- Home visits every Thursday 9:10-10:30 from week 2
- Family dinner Thursday 12<sup>th</sup>
- Harmony day Monday 16<sup>th</sup> March
- Garden Day Tuesday 31st
- Autumn art exhibition (easter holidays)

## Science, Technology, Engineering & Maths (STEM) / Sustainability & Environmental Education (SEE) with Emmy

Students will:

- explore the science behind how the human body moves
- investigate how other animals move
- conduct experiments to observe and describe how shape and materials affect the movement of objects
- plan, plant, tend and harvest seasonal produce in the garden
- prepare and eat seasonal, nutritious and delicious food in the kitchen
- participate in **whole school Garden Day** and **Harmony Day**.

## Sport

- Circus

## Art & Music

- Autumn art exhibition
- Painting with primary and secondary colours
- Cultural masks
- Dramatic play
- Mosaic making
- drawing and mapping houses

## BURIBI TIMETABLE T1, 2026

	Monday	Tuesday	Wednesday	Thursday
9.05-11am	9:05-9:25 Tune in 9:30 Munch & Crunch	9:05-9:25 Tune in 9:30 Munch & Crunch	9:05-9:25 Tune in 9:20 Munch & Crunch	<b>Home visit</b>
	9:30-10:10 <b>Investigations</b> + reading groups 10:10-10:25 Reflection 10:25-10:30 reset & Brain break	9:30-10:10 <b>Investigations</b> + reading groups 10:10-10:25 Reflection 10:25-10:30 reset & Brain break	9:20-10:30 <b>SEE- Akash</b> (cooking & gardening)	
	10:30 <b>sounds-write</b> (spelling)/ phonics	10:30 <b>sounds-write</b> (spelling)/phonics	10:30 <b>sounds-write</b> (spelling)/	
	<b>Recess 11-11.30am</b>	<b>Recess 11-11.30am</b>	<b>Recess 11-11.30am</b>	<b>Recess 10.30 - 11am</b>
11.30-12:15 pm	<b>11:30-12:00 STEAM-</b> Emmy (science and Technology English and Maths)	<b>English</b> 11:30-11:40 guided reading 11:40-11:50 Handwriting	PDHPE Circus	<b>English</b> 11:00-11:30 <b>sounds-write</b> (spelling)/phonics
	<b>English</b> 12:00-12:10 Guided reading 12:10-12:30 Handwriting	<b>11:50-12:30 Maths</b>		<b>11:30-12:30 Dance</b>
12:15-1:00	<b>12:30-1:00 Maths</b>			
	<b>Lunch DUTY 1.00 -1.45pm</b>	<b>Lunch 1.00 - 1.45pm</b>	<b>Lunch 1.00 - 1.45pm</b>	<b>Lunch 12.30–1.15pm</b>
1.45-2.45pm	1:45-1:50 Mindfulness	1:45-1:50 Mindfulness	1:45-1:50 Mindfulness	1:15-1:30 mindfulness
	<b>1:50-2:15 History</b>	1:50-2:15 Personal Development	1:50-2:45 <b>Wild Maths</b>	1:30-2:10 <b>Investigations</b> + reading groups 10:10-10:25 Reflection 10:25-10:30 reset & Brain break
	2.15 - 2.45pm Library	2.15 - 2.45pm Whole school sharing		
2.45pm	<b>Bus / parent pick up</b>	<b>bus / parent pick up</b>	<b>bus / parent pick up</b>	<b>bus / parent pick up</b>

## Numeracy

- Whole number exploration
- Friends of 10, 20, 100
- Skip counting 5's, 2's, 10's, 100's
- Addition and subtraction – whole – part-part
- 2D shapes
- 2D space - area
- Wild Maths – exploring maths outside, in nature and all around us.

## Investigations

Investigations is a time for the kids to follow and explore their own ideas in a supported intentional environment.

Areas include:

- dramatic play
- small world play
- construction
- collage
- science and nature
- tinkering
- painting/drawing
- sensory play
- writing

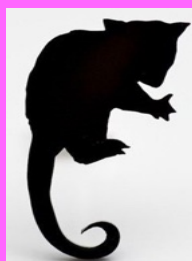
## Literacy

- Students will learn about the writing conventions of letter writing, diary entries and recounts.
- Through reading books about family and place - such as 'Family Forest' 'Tom Tom' and 'My Two Blankets' will explore diary writing, letter writing, story structure and connection to place and community.
- In regular daily sessions the students will continue to grow their language skills through word work, guided reading, and targeted grammar and writing sessions.

## Excursions/Events

- Welcome Dinner 12<sup>th</sup> Feb
- Swimming Carnival 20<sup>th</sup> Feb
- Harmony Day 16<sup>th</sup> March
- Garden day 31<sup>st</sup> March
- Class Camp TBA

## Family Forest Term 1 2026 Gooarng



## Personal Development

- My body my rules – recognising and respecting theirs and others personal boundaries.
- Respect, school rules, and

## History & Geography

- How communication has changed over time
- Kids will explore ancient forms of communication
- how has technology transformed communication and create time lines to represent this

## Science S.E.E - Emmy & Akash

In this unit students will –

- explore the differences between weather and climate.
- Investigate what drives seasonal changes, weather and climate patterns.
- They will delve into how traditional Bundjalung culture was deeply connected to seasonality.
- Students will record weather observations, discuss different climates, food production and the impact of extreme weather events.

Students will spend time working and learning both in the garden and kitchen to grow and cook seasonal produce.

## Indigenous Perspectives

- Daily acknowledgment of country
- Indigenous map of Australia
- Indigenous ways of communicating from the past to now.

## Sport

- Circus
- Swimming Carnival
- Skipping and rock hopping

## Art & Music

- Self portrait – drawing and watercolour
- Family Forest – 3D sculptural trees and families.
- Aboriginal symbols in rock art
- Symmetry - transparent butterflies

## GOOARNG TIMETABLE T1, 2026

	Monday	Tuesday	Wednesday	Thursday	Friday
<b>morning</b> 9:05–11:00	Investigations (PDHPE, English, Maths, History, Geography, Science) 9:05 – 9:15 Tune in 9:15 – 9:20 munch & crunch 9:20-10:05 Investigate 10:05-10:15 Reflect 10:15-10:20 reset	Investigations (PDHPE, English, Maths, History, Geography, Science) 10:20-11:00 Maths	English	Circus	Investigations (PDHPE, English, Maths, History, Geography, Science) 10:30-11:00 Sport
<b>Recess</b> <b>middle</b> 11:30–1:00	11:30-12:00 Read to Self Handwriting 12:00-1:00 SEE/Science – Emmy	Read to self 10min 11:30-1:00 English	Read to self 10min Maths	10:30-11 Recess Read to self 10min 11:00-12:00 English 12:00-12:30 Maths	Read to self 10min 11:30-12:15 English 12:15-1:00 Maths
<b>Lunch</b> <b>afternoon</b> 1:45–2:45	HSIE – History	1:45-2:15 PDHPE 2:15 – 2:45 School Circle/Buddy Time (PDHPE)	Kitchen/Garden – Emmy (Science)	12:30-1:15 Lunch Meditation Art	Meditation Library Classroom jobs

## Numeracy

- Place value: 3 and 4 digit numbers
- Decimals
- Addition and Subtraction
- Length
- Fractions
- Data and chance
- 

*Maths Mentals, Targeting Math Program/ workbooks, resources and games.*

## Literacy

### Persuasive writing

This unit involves looking at the biodiversity, its importance and the impact of post-colonial contact. Land management practices of two groups of people during the early days of British settlement, the indigenous people and colonial people will be looked at. Our main work will be writing a persuasive letter that uses the PEEL method to persuade the reader on the need to preserve biodiversity, or to early settlers to consider the other options of land management to secure food and why they work.

*Sounds Write decodable readers, classroom books, handwriting books and Phonics Sounds-Write Program. Reading Box comprehension. Grammar and punctuation sequence.*

## Term 1, 2026 Overview for The Yuruugin Class: Year 3 & 4



# First Practices and Biodiversity

## Excursions, incursions /Events

Week 3: Swimming Carnival Friday 20<sup>th</sup> February - Nimbin Pool

Week 8: Mt Nardi Walk – Wednesday 25<sup>th</sup> March

## History & Geography

Students will look at certain species in Australia along with a look at the everyday life of those that lived in the early colonies, specifically those that had to deal with growing food. What were their challenges, and what things could they learn from the local indigenous people to secure more food for the colony?

## Sport /PDHPE

- **Circus:** Thursdays, 11am-12:30pm
- **Values:** Curiosity, Kind Heartedness & conscientiousness
- **Netball**
- **Swimming**

## Science and Technology (Emmy Jett)

S.T.E.A.M (Science, Technology, Engineering, Arts, Mathematics).

### **Life on Earth**

Students will:  
explore Earth's systems and how they support the living organisms to form ecosystems through which energy and matter flows

describe how Aboriginal and Torres Strait Islander peoples' practices support habitats to survive and research interspecies connections

conduct plant growth experiments, compare Australian climate zones and identify strategies that minimise waste in the garden and kitchen

learn about coastal ecosystems and Culture on Minjungbal country

participate in whole school Garden Day

## Indigenous Perspectives

### **Traditions in Cultures:**

Students learn about the land practice of looking after country with fire and other land/seasonal practices and trapping that produced food.

Literary resource: Looking After Country With Fire - Aboriginal Burning Knowledge with Uncle Kuu

Author: Victor Steffensen Illustrator:Sandra Steffensen

## Creative and Performing Arts

### Visual Arts:

Gradient transitions for Autumn art show. These will be: Pastel on paper

### Drama:

Drama games on Friday afternoons

### Dance:

Special guest Mitch for weekly contemporary dance

# Yuruugin Timetable - Term 1 - 2026

9:05	Literacy	Literacy	Literacy	Literacy	Literacy
9:50	Munch & Crunch	Munch & Crunch	Munch & Crunch	Munch & Crunch	Munch & Crunch
11:00	Literacy	Literacy	SEE/STEM	Recess	Literacy
11:30	Recess	Recess	(Emmy)	Recess	Recess
1:00	Numeracy	Numeracy	Numeracy	PDHPE: Circus	Numeracy
1:45	Lunch	Lunch	Lunch	Lunch	Lunch
2:45	SEE/STEM (Emmy)	PDHPE	HSIE	CAPA: Visual Arts	CAPA: Music w Joe
	Buddy Reading				
	Literacy 30%	Numeracy 28%	Science & Tech (SEE & STEM 11%)	PDHPE 8%	CAPA 14%
					HSIE 9%

## Numeracy

### Maths in Play

- Maths in the playground
- Flying Fox Fractions
- Place Value on the Swing
- Place Race
- Factor This
- Multiple Bingo

Maths at Play is a series of games to revise learning skills and concept, and to introduce new concepts. Once games have been learned, they will be a regular element of weekly maths time. The rules of the games are flexible to allow for levels of ability and students are in pairs or groups appropriate to their skills and knowledge. Some games are on-on-one, some are individual versus whole class, and some are term based. With the ongoing development of the games, many discussions will occur as a class as to how and why to modify rules.

NAPLAN

## Literacy

### Tales and Myths

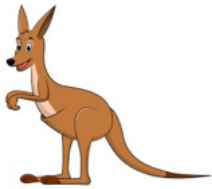
Students will examine the key features of the genres Fairy tales, Folk Tales, Fables, Mythology and identify these in texts studied. They will study a range of imaginative texts based on these genres. They will compare and contrast the character traits and motives of the three archetypes – heroes, anti-heroes and villains, and appreciate their role in the narrative and the ways that authors create characters that are memorable. Using their knowledge of these genres, they will write their own texts based on the same theme. This will also involve forest and creek visits for setting inspiration.

NAPLAN

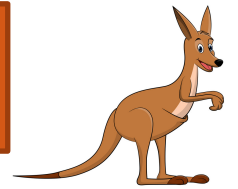
Books:

- Summarising
- Character Analysis
- Plot
- Setting Description

## Term 1, 2026 Overview for Guruman Class: 5/6



# Play and Away



### Excursions, incursions /Events

- Excursion to Brisbane
- Garden Day
- NAPLAN

### History & Geography

Within our integrated English unit, we will be also looking at the texts from the perspective of when and where the stories are set in history and the world.

### Sport /PDHPE

- Circus with Simon and Tanya
- Class games- Volleyball

### S. T. E. A. M

(Science, Technology, Engineering, Arts, Mathematics. and

### S. E. E

(Sustainability and Environmental Education)

(Emmy Jett)

#### SEE/STEM with Emmy

Students will investigate the finite nature of resources on our planet and how "waste" can be an opportunity not a problem. They will:

- Conduct a waste audit of the school and their homes and write an information report to share their findings
- Explain how recyclable, reusable, renewable, biodegradable and compostable materials enhance sustainability
- Visit the Nimbin Waste Transfer Station and (hopefully) the Lismore Resource Recovery Centre
- Visit the NimBIN Chickens project at the Nimbin Showgrounds to investigate plastic recycling
- Design solutions to reduce and manage waste at school
- Research how specific waste streams (electronic, clothing, food, soft plastics, sewage, landfill, paper & cardboard) are managed both at school, nationally and globally and write letters to campaign for change.
- Pose questions to determine whether substances dissolve in water and connect this with water pollution and waste management
- Create awareness around Global Recycling Day (March 18<sup>th</sup>), World Water Day (March 22<sup>nd</sup>), International Day of Zero Waste (March 30<sup>th</sup>)
- Create and communicate a plan to implement a collection point for Return & Earn containers at Tumble to reduce costs for the community, raise funds for Rites of Passage and direct these containers to the correct waste management stream.

Students will also participate in weekly sessions in the garden, kitchen, Science Reading, nature journaling, Turing Tumble, STEMpals letter exchanges as well as visiting the Science Festival in Brisbane.

### Creative Arts

In music, we are learning ukulele: how to play it and how to read music for it. This will lead on to guitar later in the year. We have all chosen individual instruments as well.

Working up to the Autumn Art Show, we will be experimenting with paper mache printing.

## GURUMAN TIMETABLE T1, 2026

	Monday	Tuesday	Wednesday	Thursday	Friday
morning 9:05–11:00	English (JL) 60min Munch & Crunch (5min) Science(EJ) (55min)	HSIE (EJ) Munch & Crunch (5min)	English (JL) Munch & Crunch (5min)	Maths (JL) 90 min Munch & Crunch (5min) Recess 10:30-11	English (JL) Munch & Crunch (5min)
middle 11:30–1:00	Maths (JL)	Science (EJ) 60min Maths (EJ) 30min	Maths (JL) 30min Science 60min (EJ)	English (JL) 90min Lunch 12:30-1:15	Maths (JL)
afternoon 1:45–2:45	CAPA - Music (JL)	HSIE (EJ)	CAPA – Art (JL)	Circus (PE) (JL) 90 min	PE / Sport (RD) 60 min